

MONA OFFSHORE WIND PROJECT

Environmental Statement

Volume 7, Annex 6.6: Tree survey and arboricultural impact assessment Part 6 - Appendix C

Reference Number: MOCNS-J3303-RPS-10192

Document Reference: F7.6.6

APFP Regulations: 5(2)(a)

February 2024

F01



Image of an offshore wind farm

MONA OFFSHORE WIND PROJECT

Document status					
Version	Purpose of document	Authored by	Reviewed by	Approved by	Review date
F01	Application	RPS	Mona Offshore Wind Limited	Mona Offshore Wind Limited	Feb 2024
Prepared by:		Prepared for:			
RPS		Mona Offshore Wind Ltd.			



LEGEND

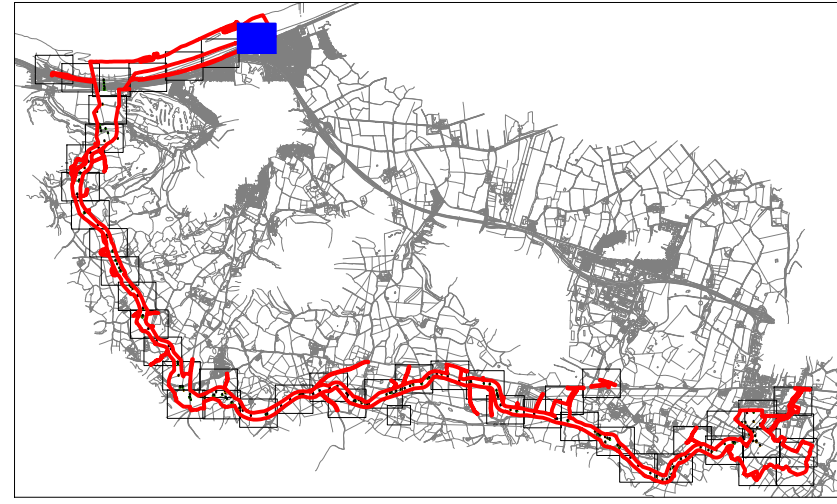
- Project boundary.
- Tree with numbered reference.
Canopy spread and coloured BS5837:2012 tree quality category as shown below.
= Tree details estimate (inaccessible tree)
• = Tree in off site location
- Vegetation group with numbered reference.
Canopy extents and coloured BS5837:2012 tree quality category as shown below.
- Hedge with numbered reference.
Canopy extents and coloured BS5837:2012 tree quality category as shown below.
- Woodland with numbered reference.
Canopy extents and coloured BS5837:2012 tree quality category as shown below.
- BS 5837:2012 Tree Quality Categories - Table 1
- Category A - High quality
- Category B - Moderate quality
- Category C - Low quality
- Category U - Unsuitable for retention
- Tree or vegetation to be removed with numbered reference. Canopy spread and BS5837:2012 tree quality category.
- Root protection area (RPA)
Calculated in accordance with Section 4.6 - BS5837:2012
- Precautionary Root protection area (RPA)
Added to un-surveyed trees, preliminary 15mØ RPA added as preventative buffer
- Tree protected by Conwy Council or Denbighshire Tree Preservation Order (TBC). Bracketed number reference relates to the TPO Schedule.
- Veteran tree buffer (15 x stem Ø)
(as per standing advice produced by Natural Resource Wales)
- Designated Ancient Woodland and buffer (15m offset, as per Natural Resource Wales woodland inventory, via open data publication)

- Arboricultural BRAG Assessment
Based on quantitative and professional assessment.
The ranking is defined as:
- Black: Significant arboreal asset within development;
- Red: High potential to constrain development;
- Amber: Moderate potential to constrain development; and
- Green: Low potential to constrain development

- Construction Compound or Access Area
Arboricultural constraint based on providing a construction exclusion zone (CEZ).
- Black: At all times, compound should avoid entering this area;
- Red: In nearly all circumstances, compound should avoid entering this area;
- Amber: In most circumstances, compound should avoid entering this area;
- Green: Little or no arboricultural constraint which would affect compound location.

- Cable Crossing Technique
- Trenchless
- Trenching / Trenchless
- Trenched
- Temporary protective fencing in accordance with Section 6.2 - BS5837:2012. See example, also shown within supporting report.
- Temporary visual warning barrier. See example detail, also shown within supporting report.

- NOTES:
- Refer to RPS Tree Survey & Arboricultural Impact Assessment Report for further details.
 - Survey based on a visual inspection from the ground and is not intended as a full arboricultural inspection.
 - Plan produced in accordance with recommendations set out in BS 5837:2012 - 'Trees in Relation to design, demolition and construction'.
 - Due to the legal protection afforded to breeding birds vegetation removal should not take place during the bird nesting period, generally, although not restricted to, March - August inclusive.
 - Survey based upon aerial photography, therefore tree locations should be deemed as approximate, and not digitally accurate.
 - Pedestrian/vehicular emergency access routes to be maintained at all times.
 - All protective fencing to be completed and approved by LPA / CA prior to commencement of any site works.
 - All works to conform with requirements of:
BS 3698:2010 - Tree Works
BS 5837:2012 - Trees in relation to design, demolition and construction



Rev	Description	By	CB	Date



Drawing Number:

7101

Project Name:
MONA OFFSHORE WIND PROJECT

Drawing Title:
TREE AND HEDGEROW PROTECTION PLAN

Scale
Scale@A0: 1:500
0 50m

Geodetic Information:
Datum: ETRS 1989
Projection: British National Grid

Data Sources: Client

Service Layer Credits: Esri, HERE, Garmin, Intermap, increment P Corp., GEBCO, USGS, FAO, NPS, NRCAN, GeoBase, IGN, Kadaster NL, Ordnance Survey, Esri Japan, METI, Esri China (Hong Kong), (c) OpenStreetMap contributors, and the GIS User Community

VER	DATE	DETAILS	BY	CHECK
01	Jan/24	Comment	RC	DC
02	Feb/24	Information	RC	DC



LEGEND

Project boundary.

Tree with numbered reference.
Canopy spread and coloured BS5837:2012 tree quality category as shown below.
= Tree details estimate (inaccessible tree)
• = Tree in off site location

Vegetation group with numbered reference.
Canopy extents and coloured BS5837:2012 tree quality category as shown below.

Hedge with numbered reference.
Canopy extents and coloured BS5837:2012 tree quality category as shown below.

Woodland with numbered reference.
Canopy extents and coloured BS5837:2012 tree quality category as shown below.

BS 5837:2012 Tree Quality Categories - Table 1

Category A - High quality

Category B - Moderate quality

Category C - Low quality

Category U - Unsuitable for retention

Tree or vegetation to be removed with numbered reference. Canopy spread and BS5837:2012 tree quality category.

Root protection area (RPA)
Calculated in accordance with Section 4.6 - BS5837:2012

Precautionary Root protection area (RPA)
Added to un-surveyed trees, preliminary 15mØ RPA added as preventative buffer

Tree protected by Conwy Council or Denbighshire Tree Preservation Order (TBC). Bracketed number reference relates to the TPO Schedule.

Veteran tree buffer (15 x stem Ø)
(as per standing advice produced by Natural Resource Wales)

Designated Ancient Woodland and buffer (15m offset, as per Natural Resource Wales woodland inventory, via open data publication)

Arboricultural BRAG Assessment

Based on quantitative and professional assessment. The ranking is defined as:

Black: Significant arboreal asset within development;

Red: High potential to constrain development;

Amber: Moderate potential to constrain development; and

Green: Low potential to constrain development

Construction Compound or Access Area

Arboricultural constraint based on providing a construction exclusion zone (CEZ):

Black: At all times, compound should avoid entering this area;

Red: In nearly all circumstances, compound should avoid entering this area;

Amber: In most circumstances, compound should avoid entering this area;

Green: Little or no arboricultural constraint which would affect compound location.

Cable Crossing Technique

Trenchless

Trenching / Trenchless

Trenched

Temporary protective fencing in accordance with Section 6.2 - BS5837:2012. See example, also shown within supporting report.

Temporary visual warning barrier. See example detail, also shown within supporting report.

NOTES:

- Refer to RPS Tree Survey & Arboricultural Impact Assessment Report for further details
- Survey based on a visual inspection from the ground and is not intended as a full arboricultural inspection
- Plan produced in accordance with recommendations set out in BS 5837:2012 - 'Trees in Relation to design, demolition and construction'
- Due to the level protection afforded to breeding birds vegetation removal should not take place during the bird nesting period; generally, although not restricted to, March - August inclusive.
- Survey based upon aerial photography; therefore tree locations should be deemed as approximate, and not digitally accurate
- Pedestrian/vehicular emergency access routes to be maintained at all times.
- All protective fencing to be completed and approved by LPA / CA prior to commencement of any site works
- All works to conform with requirements of:
BS 3698:2010 - Tree Works
BS 5837:2012 - Trees in relation to design, demolition and construction

Rev	Description	By	CB	Date

Partners in UK offshore wind

Drawing Number:

7102

VER	DATE	DETAILS	BY	CHECK
01	Jan/24	Comment	RC	DC
02	Feb/24	Information	RC	DC

Project Name:

MONA OFFSHORE WIND PROJECT

Drawing Title:

TREE AND HEDGEROW PROTECTION PLAN

Scale

Scale@A0: 1:500

Geodetic Information:

Datum: ETRS 1989
Projection: British National Grid

Data Sources:

Client

Service Layer Credits:

Esri, HERE, Garmin, Intermap, increment P Corp., GEBCO, USGS, FAO, NPS, NRCAN, GeoBase, IGN, Kadaster NL, Ordnance Survey, Esri Japan, METI, Esri China (Hong Kong), (c) OpenStreetMap contributors, and the GIS User Community



LEGEND

- Project boundary.
- Tree with numbered reference.
Canopy spread and coloured BS5837:2012 tree quality category as shown below.
= Tree details estimate (inaccessible tree)
* = Tree in off site location
- Vegetation group with numbered reference.
Canopy extents and coloured BS5837:2012 tree quality category as shown below.
- Hedge with numbered reference.
Canopy extents and coloured BS5837:2012 tree quality category as shown below.
- Woodland with numbered reference.
Canopy extents and coloured BS5837:2012 tree quality category as shown below.
- BS 5837:2012 Tree Quality Categories - Table 1
- Category A - High quality
 - Category B - Moderate quality
 - Category C - Low quality
 - Category U - Unsuitable for retention
- Tree or vegetation to be removed with numbered reference. Canopy spread and BS5837:2012 tree quality category.
- Root protection area (RPA)
Calculated in accordance with Section 4.6 - BS5837:2012
- Precautionary Root protection area (RPA)
Added to un-surveyed trees, preliminary 15mØ RPA added as preventative buffer
- Tree protected by Conwy Council or Denbighshire Tree Preservation Order (TBC). Bracketed number reference relates to the TPO Schedule.
- Veteran tree buffer (15 x stem Ø)
(as per standing advice produced by Natural Resource Wales)
- Designated Ancient Woodland and buffer (15m offset, as per Natural Resource Wales woodland inventory, via open data publication)

Arboricultural BRAG Assessment
Based on quantitative and professional assessment.
The ranking is defined as:

- Black: Significant arboreal asset within development;
- Red: High potential to constrain development;
- Amber: Moderate potential to constrain development; and
- Green: Low potential to constrain development

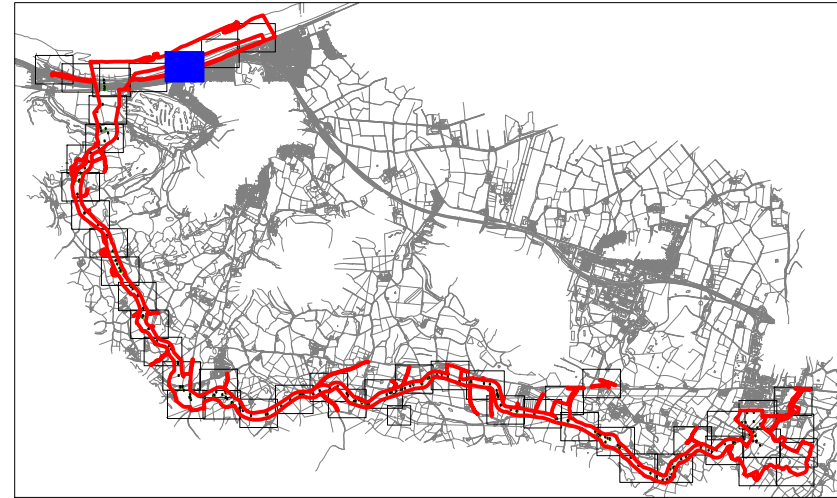
Construction Compound or Access Area
Arboricultural constraint based on providing a construction exclusion zone (CEZ):

- Black: At all times, compound should avoid entering this area;
- Red: In nearly all circumstances, compound should avoid entering this area;
- Amber: In most circumstances, compound should avoid entering this area;
- Green: Little or no arboricultural constraint which would affect compound location.

- Cable Crossing Technique
- Trenchless
 - Trenching / Trenchless
 - Trenched
- Temporary protective fencing in accordance with Section 6.2 - BS5837:2012. See example, also shown within supporting report.
- Temporary visual warning barrier. See example detail, also shown within supporting report.

NOTES:

- Refer to RPS Tree Survey & Arboricultural Impact Assessment Report for further details.
- Survey based on a visual inspection from the ground and is not intended as a full arboricultural inspection.
- Plan produced in accordance with recommendations set out in BS 5837:2012 - 'Trees in Relation to design, demolition and construction'.
- Due to the legal protection afforded to breeding birds vegetation removal should not take place during the bird nesting period, generally, although not restricted to, March - August inclusive.
- Survey based upon aerial photography, therefore tree locations should be deemed as approximate, and not digitally accurate.
- Pedestrian/ vehicular emergency access routes to be maintained at all times.
- All protective fencing to be completed and approved by LPA / CA prior to commencement of any site works.
- All works to conform with requirements of:
BS 3698:2010 - Tree Works
BS 5837:2012 - Trees in relation to design, demolition and construction



Rev	Description	By	CB	Date



Drawing Number:

7103

Project Name:
MONA OFFSHORE WIND PROJECT

Drawing Title:
TREE AND HEDGEROW PROTECTION PLAN

Scale
Scale@A0: 1:500
0 50m

Geodetic Information:
Datum: ETRS 1989
Projection: British National Grid

Data Sources: Client

Service Layer Credits: Esri, HERE, Garmin, Intermap, increment P Corp., GEBCO, USGS, FAO, NPS, NRCAN, GeoBase, IGN, Kadaster NL, Ordnance Survey, Esri Japan, METI, Esri China (Hong Kong), (c) OpenStreetMap contributors, and the GIS User Community

VER	DATE	DETAILS	BY	CHECK
01	Jan/24	Comment	RC	DC
02	Feb/24	Information	RC	DC



LEGEND

- Project boundary.
- Tree with numbered reference.
Canopy spread and coloured BS5837:2012 tree quality category as shown below.
= Tree details estimate (inaccessible tree)
• = Tree in off site location
- Vegetation group with numbered reference.
Canopy extents and coloured BS5837:2012 tree quality category as shown below.
- Hedge with numbered reference.
Canopy extents and coloured BS5837:2012 tree quality category as shown below.
- Woodland with numbered reference.
Canopy extents and coloured BS5837:2012 tree quality category as shown below.
- BS 5837:2012 Tree Quality Categories - Table 1
- Category A - High quality
- Category B - Moderate quality
- Category C - Low quality
- Category U - Unsuitable for retention
- Tree or vegetation to be removed with numbered reference. Canopy spread and BS5837:2012 tree quality category.
- Root protection area (RPA)
Calculated in accordance with Section 4.6 - BS5837:2012
- Precautionary Root protection area (RPA)
Added to un-surveyed trees, preliminary 15mØ RPA added as preventative buffer
- Tree protected by Conwy Council or Denbighshire Tree Preservation Order (TBC). Bracketed number reference relates to the TPO Schedule.
- Veteran tree buffer (15 x stem Ø)
(as per standing advice produced by Natural Resource Wales)
- Designated Ancient Woodland and buffer (15m offset, as per Natural Resource Wales woodland inventory, via open data publication)

Arboricultural BRAG Assessment
Based on quantitative and professional assessment.
The ranking is defined as:

Black: Significant arboreal asset within development.

Red: High potential to constrain development;

Amber: Moderate potential to constrain development; and

Green: Low potential to constrain development

Construction Compound or Access Area
Arboricultural constraint based on providing a construction exclusion zone (CEZ).

Black: At all times, compound should avoid entering this area;

Red: In nearly all circumstances, compound should avoid entering this area;

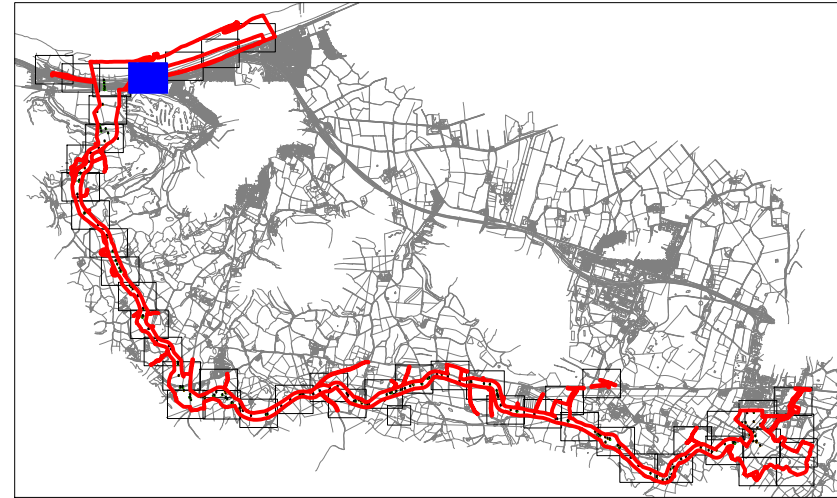
Amber: In most circumstances, compound should avoid entering this area;

Green: Little or no arboricultural constraint which would affect compound location.

- Cable Crossing Technique
- Trenchless
- Trenching / Trenchless
- Trenched
- Temporary protective fencing in accordance with Section 6.2 - BS5837:2012. See example, also shown within supporting report.
- Temporary visual warning barrier. See example detail, also shown within supporting report.

NOTES:

- Refer to RPS Tree Survey & Arboricultural Impact Assessment Report for further details.
- Survey based on a visual inspection from the ground and is not intended as a full arboricultural inspection.
- Plan produced in accordance with recommendations set out in BS 5837:2012 - 'Trees in Relation to design, demolition and construction'.
- Due to the legal protection afforded to breeding birds vegetation removal should not take place during the bird nesting period, generally, although not restricted to, March - August inclusive.
- Survey based upon aerial photography, therefore tree locations should be deemed as approximate, and not digitally accurate.
- Pedestrian/ vehicular emergency access routes to be maintained at all times.
- All protective fencing to be completed and approved by LPA / CA prior to commencement of any site works.
- All works to conform with requirements of:
BS 5838:2010 - Tree Works
BS 5837:2012 - Trees in relation to design, demolition and construction



Rev	Description	By	CB	Date



Drawing Number:

7104

VER	DATE	DETAILS	BY	CHECK
01	Jan/24	Comment	RC	DC
02	Feb/24	Information	RC	DC

Project Name:
MONA OFFSHORE WIND PROJECT

Drawing Title:
TREE AND HEDGEROW PROTECTION PLAN

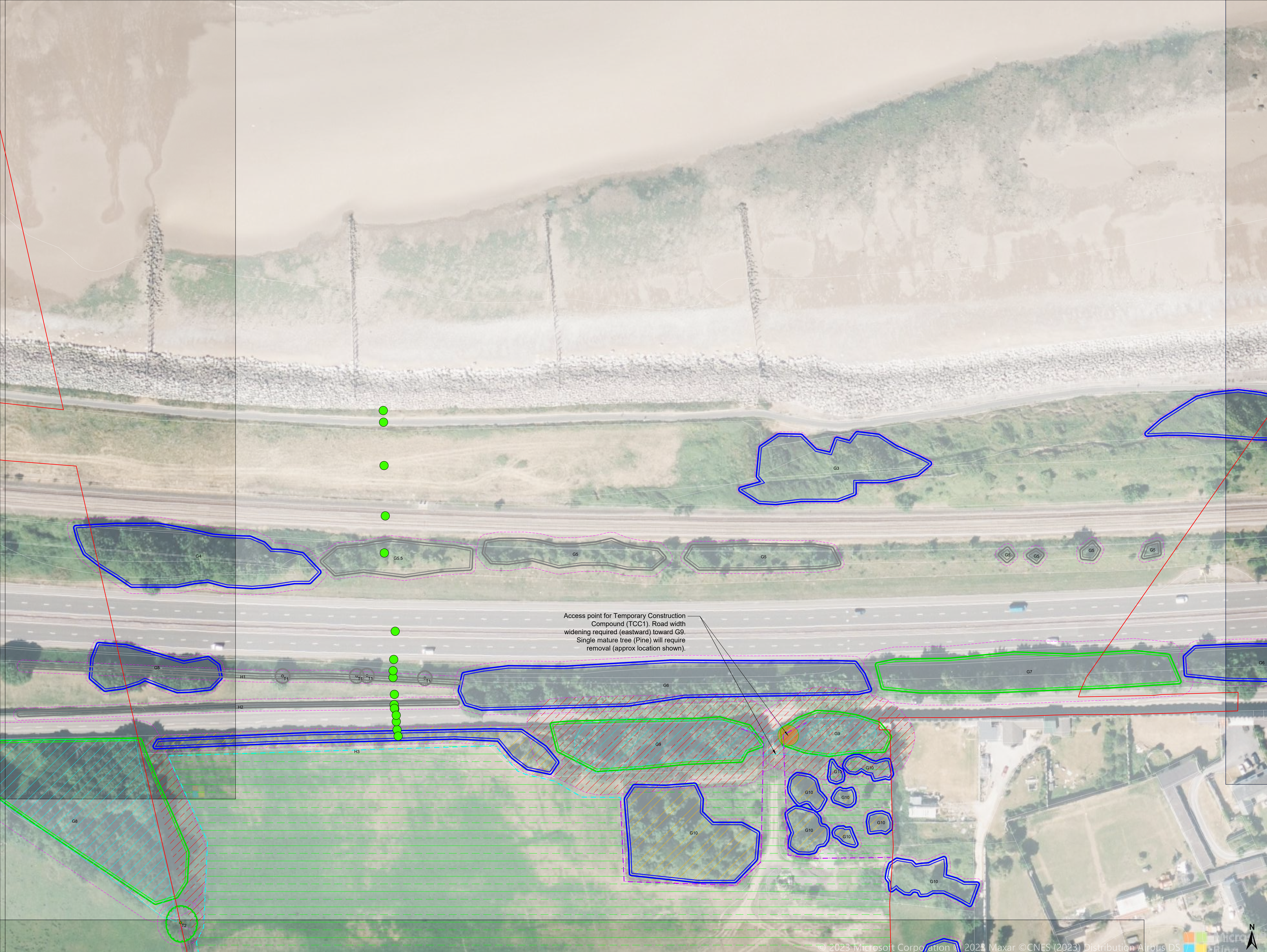
Scale
Scale@A0: 1:500
0 50m

Geodetic Information:
Datum: ETRS 1989
Projection: British National Grid

Data Sources: Client

Service Layer Credits: Esri, HERE, Garmin, Intermap, increment P Corp., GEBCO, USGS, FAO, NPS, NRCAN, GeoBase, IGN, Kadaster NL, Ordnance Survey, Esri Japan, METI, Esri China (Hong Kong), (c) OpenStreetMap contributors, and the GIS User Community





LEGEND

Project boundary.

Tree with numbered reference.
Canopy spread and coloured BS5837:2012 tree quality category as shown below.
= Tree details estimate (inaccessible tree)
• = Tree in off site location

Vegetation group with numbered reference.
Canopy extents and coloured BS5837:2012 tree quality category as shown below.

Hedge with numbered reference.
Canopy extents and coloured BS5837:2012 tree quality category as shown below.

Woodland with numbered reference.
Canopy extents and coloured BS5837:2012 tree quality category as shown below.

BS 5837:2012 Tree Quality Categories - Table 1

Category A - High quality

Category B - Moderate quality

Category C - Low quality

Category U - Unsuitable for retention

Tree or vegetation to be removed with numbered reference. Canopy spread and BS5837:2012 tree quality category.

Root protection area (RPA)
Calculated in accordance with Section 4.6 - BS5837:2012

Precautionary Root protection area (RPA)
Added to un-surveyed trees, preliminary 15mØ RPA added as preventative buffer

Tree protected by Cornvy Council or Denbighshire Tree Preservation Order (TBC). Bracketed number reference relates to the TPO Schedule.

Veteran tree buffer (15 x stem Ø)
(as per standing advice produced by Natural Resource Wales)

Designated Ancient Woodland and buffer (15m offset, as per Natural Resource Wales woodland inventory, via open data publication)

Arboricultural BRAG Assessment

Based on quantitative and professional assessment. The ranking is defined as:

Black: Significant arboreal asset within development;

Red: High potential to constrain development;

Amber: Moderate potential to constrain development; and

Green: Low potential to constrain development

Construction Compound or Access Area

Arboricultural constraint based on providing a construction exclusion zone (CEZ).

Black: At all times, compound should avoid entering this area;

Red: In nearly all circumstances, compound should avoid entering this area.

Amber: In most circumstances, compound should avoid entering this area;

Green: Little or no arboricultural constraint which would affect compound location.

Cable Crossing Technique

Trenchless

Trenching / Trenchless

Trenched

Temporary protective fencing in accordance with Section 6.2 - BS5837:2012. See example, also shown within supporting report.

Temporary visual warning barrier. See example detail, also shown within supporting report.

NOTES:

- Refer to RPS Tree Survey & Arboricultural Impact Assessment Report for further details.
- Survey based on a visual inspection from the ground and is not intended as a full arboricultural inspection.
- Plan produced in accordance with recommendations set out in BS 5837:2012 - 'Trees in Relation to design, demolition and construction'.
- Due to the need for protection afforded to breeding birds vegetation removal should not take place during the bird nesting period, generally, although not restricted to, March - August inclusive.
- Survey based upon aerial photography, therefore tree locations should be deemed as approximate, and not digitally accurate.
- Pedestrian/vehicular emergency access routes to be maintained at all times.
- All protective fencing to be completed and approved by LPA / CA prior to commencement of any site works.
- All works to conform with requirements of:
BS 3698:2010 - Tree Works
BS 5837:2012 - Trees in relation to design, demolition and construction

Rev	Description	By	CB	Date

Partners in UK offshore wind

Drawing Number:
7105

VER	DATE	DETAILS	BY	CHECK
01	Jan/24	Comment	RC	DC
02	Feb/24	Information	RC	DC

Project Name:
MONA OFFSHORE WIND PROJECT

Drawing Title:
TREE AND HEDGEROW PROTECTION PLAN

Scale
Scale@A0: 1:500

Geodetic Information:
Datum: ETRS 1989
Projection: British National Grid

Data Sources: Client

Service Layer Credits: Esri, HERE, Garmin, Intermap, increment P Corp., GEBCO, USGS, FAO, NPS, NRCAN, GeoBase, IGN, Kadaster NL, Ordnance Survey, Esri Japan, METI, Esri China (Hong Kong), (c) OpenStreetMap contributors, and the GIS User Community

P:\3900 Series\JSL3999 - Morgan and Moira OMF\Arboricultural\Tech\ACAD\Current\JSL3999_800C_TPP_Cable_Route.dwg
P:\3900 Series\JSL3999 - Morgan and Moira OMF\Arboricultural\Tech\ACAD\Current\JSL3999_800C_TPP Cable_Route.dwg



LEGEND

Project boundary.

Tree with numbered reference.
Canopy spread and coloured BS5837:2012 tree quality category as shown below.
= Tree details estimate (inaccessible tree)
• = Tree in off site location

Vegetation group with numbered reference.
Canopy extents and coloured BS5837:2012 tree quality category as shown below.

Hedge with numbered reference.
Canopy extents and coloured BS5837:2012 tree quality category as shown below.

Woodland with numbered reference.
Canopy extents and coloured BS5837:2012 tree quality category as shown below.

BS 5837:2012 Tree Quality Categories - Table 1

Category A - High quality

Category B - Moderate quality

Category C - Low quality

Category U - Unsuitable for retention

Tree or vegetation to be removed with numbered reference. Canopy spread and BS5837:2012 tree quality category.

Root protection area (RPA)
Calculated in accordance with Section 4.6 - BS5837:2012

Precautionary Root protection area (RPA)
Added to un-surveyed trees, preliminary 15mØ RPA added as preventative buffer

Tree protected by Conwy Council or Denbighshire Tree Preservation Order (TBC). Bracketted number reference relates to the TPO Schedule.

Veteran tree buffer (15 x stem Ø)
(as per standing advice produced by Natural Resource Wales)

Designated Ancient Woodland and buffer (15m offset, as per Natural Resource Wales woodland inventory, via open data publication)

Arboricultural BRAG Assessment
Based on quantitative and professional assessment.
The ranking is defined as:

Black: Significant arboreal asset within development;

Red: High potential to constrain development;

Amber: Moderate potential to constrain development; and

Green: Low potential to constrain development

Construction Compound or Access Area
Arboricultural constraint based on providing a construction exclusion zone (CEZ):

Black: At all times, compound should avoid entering this area;

Red: In nearly all circumstances, compound should avoid entering this area;

Amber: In most circumstances, compound should avoid entering this area;

Green: Little or no arboricultural constraint which would affect compound location.

Cable Crossing Technique

Trenchless

Trenching / Trenchless

Trenched

Temporary protective fencing in accordance with Section 6.2 - BS5837:2012. See example, also shown within supporting report.

Temporary visual warning barrier. See example detail, also shown within supporting report.

NOTES:

Refer to RPS Tree Survey & Arboricultural Impact Assessment Report for further details.

Survey based on a visual inspection from the ground and is not intended as a full arboricultural inspection.

Plan produced in accordance with recommendations set out in BS 5837:2012 - 'Trees in Relation to design, demolition and construction'.

Due to the legal protection afforded to breeding birds vegetation removal should not take place during the bird nesting period, generally, although not restricted to, March - August inclusive.

Survey based upon aerial photography, therefore tree locations should be deemed as approximate, and not digitally accurate.

Pedestrian/vehicular emergency access routes to be maintained at all times.

All protective fencing to be completed and approved by LPA / CA prior to commencement of any site works.

All works to conform with requirements of:
BS 3698:2010 - Tree Works
BS 5837:2012 - Trees in relation to design, demolition and construction

Rev	Description	By	CB	Date

Partners in UK offshore wind

Drawing Number:

7106

VER	DATE	DETAILS	BY	CHECK
01	Jan/24	Comment	RC	DC
02	Feb/24	Information	RC	DC



LEGEND

Project boundary.

Tree with numbered reference.
Canopy spread and coloured BS5837:2012 tree quality category as shown below.
= Tree details estimate (inaccessible tree)
• = Tree in off site location

Vegetation group with numbered reference.
Canopy extents and coloured BS5837:2012 tree quality category as shown below.

Hedge with numbered reference.
Canopy extents and coloured BS5837:2012 tree quality category as shown below.

Woodland with numbered reference.
Canopy extents and coloured BS5837:2012 tree quality category as shown below.

BS 5837:2012 Tree Quality Categories - Table 1

Category A - High quality

Category B - Moderate quality

Category C - Low quality

Category U - Unsuitable for retention

Tree or vegetation to be removed with numbered reference. Canopy spread and BS5837:2012 tree quality category.

Root protection area (RPA)
Calculated in accordance with Section 4.6 - BS5837:2012

Precautionary Root protection area (RPA)
Added to un-surveyed trees, preliminary 15mØ RPA added as preventative buffer

Tree protected by Conway Council or Denbighshire Tree Preservation Order (TBC). Bracketted number reference relates to the TPO Schedule.

Veteran tree buffer (15 x stem Ø)
(as per standing advice produced by Natural Resource Wales)

Designated Ancient Woodland and buffer (15m offset, as per Natural Resource Wales woodland inventory, via open data publication)

Arboricultural BRAG Assessment
Based on quantitative and professional assessment.
The ranking is defined as:

Black: Significant arboreal asset within development;

Red: High potential to constrain development;

Amber: Moderate potential to constrain development; and

Green: Low potential to constrain development

Construction Compound or Access Area
Arboricultural constraint based on providing a construction exclusion zone (CEZ).

Black: At all times, compound should avoid entering this area;

Red: In nearly all circumstances, compound should avoid entering this area.

Amber: In most circumstances, compound should avoid entering this area;

Green: Little or no arboricultural constraint which would affect compound location.

Cable Crossing Technique

Trenchless

Trenching / Trenchless

Trenched

Temporary protective fencing in accordance with Section 6.2 - BS5837:2012. See example, also shown within supporting report.

Temporary visual warning barrier. See example detail, also shown within supporting report.

NOTES:

Refer to RPS Tree Survey & Arboricultural Impact Assessment Report for further details.

Survey based on a visual inspection from the ground and is not intended as a full arboricultural inspection.

Plan produced in accordance with recommendations set out in BS 5837:2012 - 'Trees in Relation to design, demolition and construction'.

Due to the level protection afforded to breeding birds vegetation removal should not take place during the bird nesting period, generally, although not restricted to, March - August inclusive.

Survey based upon aerial photography, therefore tree locations should be deemed as approximate, and not digitally accurate.

Pedestrian/vehicular emergency access routes to be maintained at all times.

All protective fencing to be completed and approved by LPA / CA prior to commencement of any site works.

All works to conform with requirements of:
BS 3698:2010 - Tree Works
BS 5837:2012 - Trees in relation to design, demolition and construction

Rev	Description	By	CB	Date

Partners in UK offshore wind

Drawing Number:
7107

VER	DATE	DETAILS	BY	CHECK
01	Jan/24	Comment	RC	DC
02	Feb/24	Information	RC	DC



LEGEND

Project boundary.

T1

Tree with numbered reference.
Canopy spread and coloured BS5837:2012 tree quality category as shown below.
= Tree details estimate (inaccessible tree)
• = Tree in off site location

G1

Vegetation group with numbered reference.
Canopy extents and coloured BS5837:2012 tree quality category as shown below.

H1

Hedge with numbered reference.
Canopy extents and coloured BS5837:2012 tree quality category as shown below.

W1

Woodland with numbered reference.
Canopy extents and coloured BS5837:2012 tree quality category as shown below.

BS 5837:2012 Tree Quality Categories - Table 1

Category A - High quality

Category B - Moderate quality

Category C - Low quality

Category U - Unsuitable for retention

T1

Tree or vegetation to be removed with numbered reference. Canopy spread and BS5837:2012 tree quality category.

Root protection area (RPA)
Calculated in accordance with Section 4.6 - BS5837:2012

Precautionary Root protection area (RPA)
Added to un-surveyed trees, preliminary 15mØ RPA added as preventative buffer

Tree protected by Conwy Council or Denbighshire Tree Preservation Order (TBC). Bracketed number reference relates to the TPO Schedule.

Veteran tree buffer (15 x stem Ø)
(as per standing advice produced by Natural Resource Wales)

W1

Designated Ancient Woodland and buffer (15m offset, as per Natural Resource Wales woodland inventory, via open data publication)

Arboricultural BRAG Assessment
Based on quantitative and professional assessment.
The ranking is defined as:

Black: Significant arboreal asset within development;

Red: High potential to constrain development;

Amber: Moderate potential to constrain development; and

Green: Low potential to constrain development

Construction Compound or Access Area
Arboricultural constraint based on providing a construction exclusion zone (CEZ).

Black: At all times, compound should avoid entering this area;

Red: In nearly all circumstances, compound should avoid entering this area;

Amber: In most circumstances, compound should avoid entering this area;

Green: Little or no arboricultural constraint which would affect compound location.

Cable Crossing Technique

Trenchless

Trenching / Trenchless

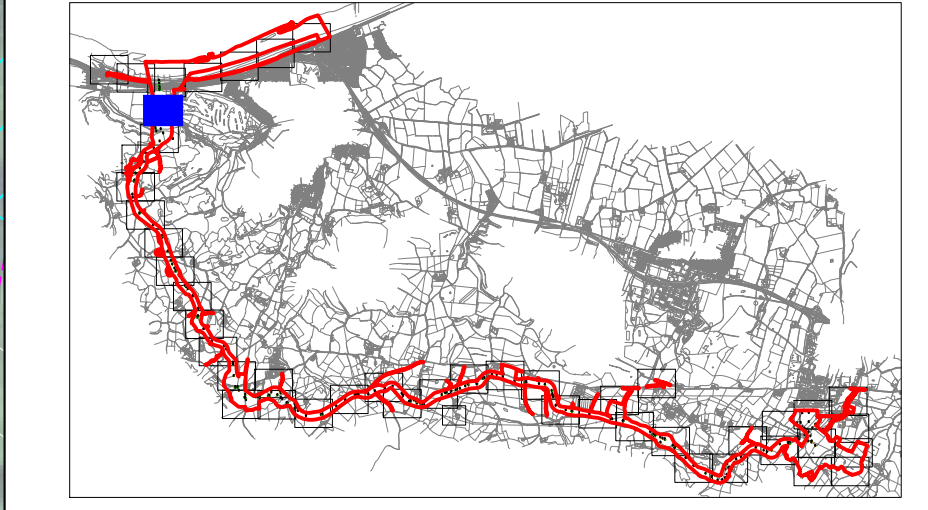
Trenched

Temporary protective fencing in accordance with Section 6.2 - BS5837:2012. See example, also shown within supporting report.

Temporary visual warning barrier. See example detail, also shown within supporting report.

NOTES:

- Refer to RPS Tree Survey & Arboricultural Impact Assessment Report for further details
- Survey based on a visual inspection from the ground and is not intended as a full arboricultural inspection
- Plan produced in accordance with recommendations set out in BS 5837:2012 - "Trees in Relation to design, demolition and construction"
- Due to the legal protection afforded to breeding birds vegetation removal should not take place during the bird nesting period, generally, although not restricted to, March - August inclusive.
- Survey based upon aerial photography, therefore tree locations should be deemed as approximate, and not digitally accurate
- Pedestrian/vehicular emergency access routes to be maintained at all times.
- All protective fencing to be completed and approved by LPA / CA prior to commencement of any site works
- All works to conform with requirements of:
BS 5838:2010 - Tree Works
BS 5837:2012 - Trees in relation to design, demolition and construction



Rev	Description	By	CB	Date

EnBW

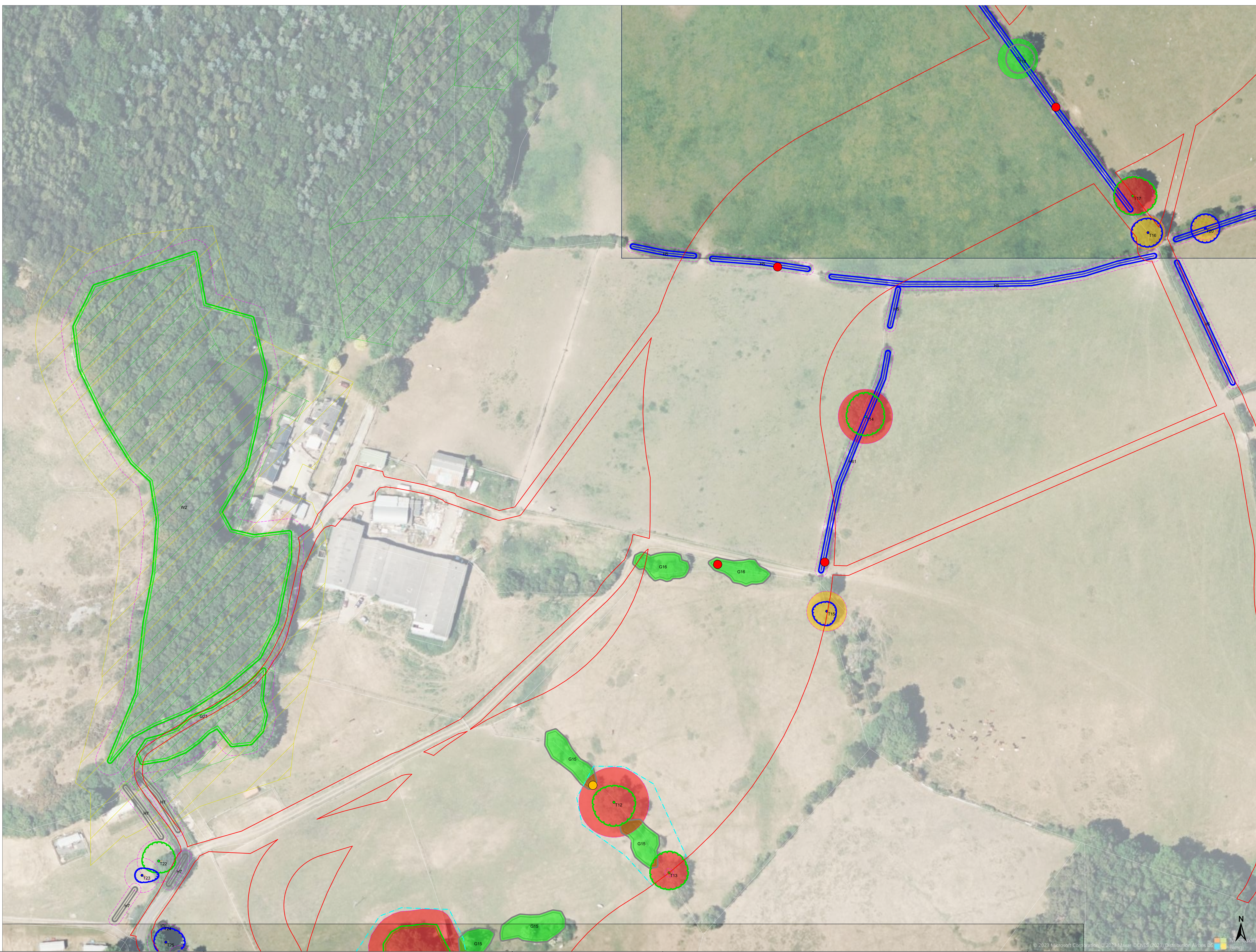
Partners in UK offshore wind

bfc

RPS

Drawing Number:
7108

VER	DATE	DETAILS	BY	CHECK
01	Jan/24	Comment	RC	DC
02	Feb/24	Information	RC	DC



LEGEND

Project boundary.

Tree with numbered reference.
Canopy spread and coloured BS5837:2012 tree quality category as shown below.
■ = Tree details estimate (inaccessible tree)
● = Tree in off site location

Vegetation group with numbered reference.
Canopy extents and coloured BS5837:2012 tree quality category as shown below.

Hedge with numbered reference.
Canopy extents and coloured BS5837:2012 tree quality category as shown below.

Woodland with numbered reference.
Canopy extents and coloured BS5837:2012 tree quality category as shown below.

BS 5837:2012 Tree Quality Categories - Table 1

Category A - High quality

Category B - Moderate quality

Category C - Low quality

Category U - Unsuitable for retention

Tree or vegetation to be removed with numbered reference. Canopy spread and BS5837:2012 tree quality category.

Root protection area (RPA)
Calculated in accordance with Section 4.6 - BS5837:2012

Precautionary Root protection area (RPA)
Added to un-surveyed trees, preliminary 15mØ RPA added as preventative buffer

Tree protected by Conwy Council or Denbighshire Tree Preservation Order (TBC). Bracketted number reference relates to the TPO Schedule.

Veteran tree buffer (15 x stem Ø)
(as per standing advice produced by Natural Resource Wales)

Designated Ancient Woodland and buffer (15m offset, as per Natural Resource Wales woodland inventory, via open data publication)

Arboricultural BRAG Assessment
Based on quantitative and professional assessment.
The ranking is defined as:

Black: Significant arboreal asset within development.

Red: High potential to constrain development;

Amber: Moderate potential to constrain development; and

Green: Low potential to constrain development

Construction Compound or Access Area
Arboricultural constraint based on providing a construction exclusion zone (CEZ):

Black: At all times, compound should avoid entering this area;

Red: In nearly all circumstances, compound should avoid entering this area;

Amber: In most circumstances, compound should avoid entering this area;

Green: Little or no arboricultural constraint which would affect compound location.

Cable Crossing Technique

Trenchless

Trenching / Trenchless

Trenched

Temporary protective fencing in accordance with Section 6.2 - BS5837:2012. See example, also shown within supporting report.

Temporary visual warning barrier. See example detail, also shown within supporting report.

NOTES:

Refer to RPS Tree Survey & Arboricultural Impact Assessment Report for further details.

Survey based on a visual inspection from the ground and is not intended as a full arboricultural inspection.

Plan produced in accordance with recommendations set out in BS 5837:2012 - 'Trees in Relation to design, demolition and construction'.

Due to total protection afforded to breeding birds vegetation removal should not take place during the bird nesting period, generally, although not restricted to, March - August inclusive.

Survey based upon aerial photography, therefore tree locations should be deemed as approximate, and not digitally accurate.

Pedestrian/vehicular emergency access routes to be maintained at all times.

All protective fencing to be completed and approved by LPA / CA prior to commencement of any site works.

All works to conform with requirements of:
BS 3698:2010 - Tree Works
BS 5837:2012 - Trees in relation to design, demolition and construction

Rev	Description	By	CB	Date

Partners in UK offshore wind

Drawing Number:
7110

VER	DATE	DETAILS	BY	CHECK
01	Jan/24	Comment	RC	DC
02	Feb/24	Information	RC	DC

Project Name:
MONA OFFSHORE WIND PROJECT

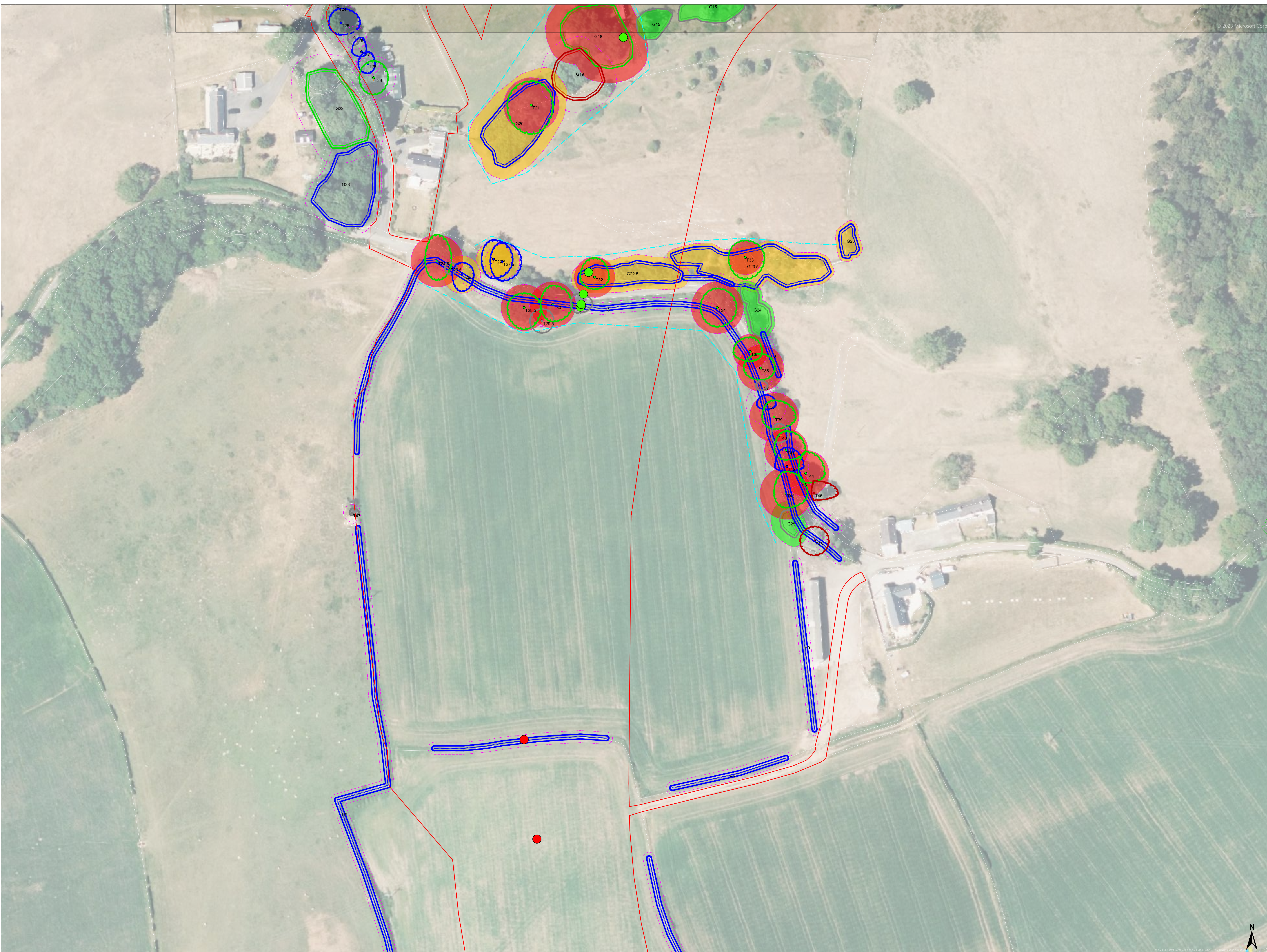
Drawing Title:
TREE AND HEDGEROW PROTECTION PLAN

Scale
Scale@A0: 1:500
0 50m

Geodetic Information:
Datum: ETRS 1989
Projection: British National Grid

Data Sources: Client

Service Layer Credits: Esri, HERE, Garmin, Intermap, increment P Corp., GEBCO, USGS, FAO, NPS, NRCAN, GeoBase, IGN, Kadaster NL, Ordnance Survey, Esri Japan, METI, Esri China (Hong Kong), (c) OpenStreetMap contributors, and the GIS User Community





LEGEND

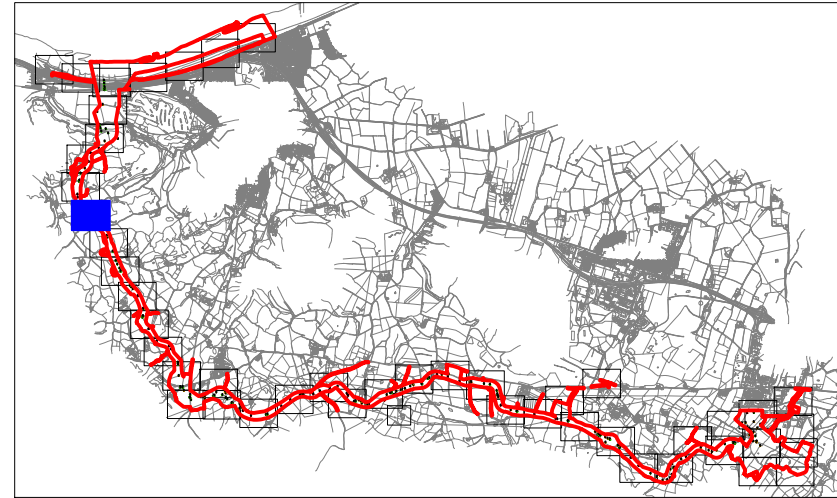
- Project boundary.
- Tree with numbered reference.
Canopy spread and coloured BS5837:2012 tree quality category as shown below.
= Tree details estimate (inaccessible tree)
• = Tree in off site location
- Vegetation group with numbered reference.
Canopy extents and coloured BS5837:2012 tree quality category as shown below.
- Hedge with numbered reference.
Canopy extents and coloured BS5837:2012 tree quality category as shown below.
- Woodland with numbered reference.
Canopy extents and coloured BS5837:2012 tree quality category as shown below.
- BS 5837:2012 Tree Quality Categories - Table 1
- Category A - High quality
- Category B - Moderate quality
- Category C - Low quality
- Category U - Unsuitable for retention
- Tree or vegetation to be removed with numbered reference. Canopy spread and BS5837:2012 tree quality category.
- Root protection area (RPA)
Calculated in accordance with Section 4.6 - BS5837:2012
- Precautionary Root protection area (RPA)
Added to un-surveyed trees, preliminary 15mØ RPA added as preventative buffer
- Tree protected by Conwy Council or Denbighshire Tree Preservation Order (TBC). Bracketed number reference relates to the TPO Schedule.
- Veteran tree buffer (15 x stem Ø)
(as per standing advice produced by Natural Resource Wales)
- Designated Ancient Woodland and buffer (15m offset, as per Natural Resource Wales woodland inventory, via open data publication)

- Arboricultural BRAG Assessment
Based on quantitative and professional assessment.
The ranking is defined as:
- Black: Significant arboreal asset within development;
- Red: High potential to constrain development;
- Amber: Moderate potential to constrain development; and
- Green: Low potential to constrain development

- Construction Compound or Access Area
Arboricultural constraint based on providing a construction exclusion zone (CEZ):
- Black: At all times, compound should avoid entering this area;
- Red: In nearly all circumstances, compound should avoid entering this area;
- Amber: In most circumstances, compound should avoid entering this area;
- Green: Little or no arboricultural constraint which would affect compound location.

- Cable Crossing Technique
- Trenchless
- Trenching / Trenchless
- Trenched
- Temporary protective fencing in accordance with Section 6.2 - BS5837:2012. See example, also shown within supporting report.
- Temporary visual warning barrier. See example detail, also shown within supporting report.

- NOTES:
- Refer to RPS Tree Survey & Arboricultural Impact Assessment Report for further details
 - Survey based on a visual inspection from the ground and is not intended as a full arboricultural inspection
 - Plan produced in accordance with recommendations set out in BS 5837:2012 - 'Trees in Relation to design, demolition and construction'
 - Due to the legal protection afforded to breeding birds vegetation removal should not take place during the bird nesting period, generally, although not restricted to, March - August inclusive.
 - Survey based upon aerial photography, therefore tree locations should be deemed as approximate, and not digitally accurate
 - Pedestrian/vehicular emergency access routes to be maintained at all times.
 - All protective fencing to be completed and approved by LPA / CA prior to commencement of any site works
 - All works to conform with requirements of:
BS 3698:2010 - Tree Works
BS 5837:2012 - Trees in relation to design, demolition and construction



Rev	Description	By	CB	Date



Drawing Number:

7112

VER	DATE	DETAILS	BY	CHECK
01	Jan/24	Comment	RC	DC
02	Feb/24	Information	RC	DC

Project Name:
MONA OFFSHORE WIND PROJECT

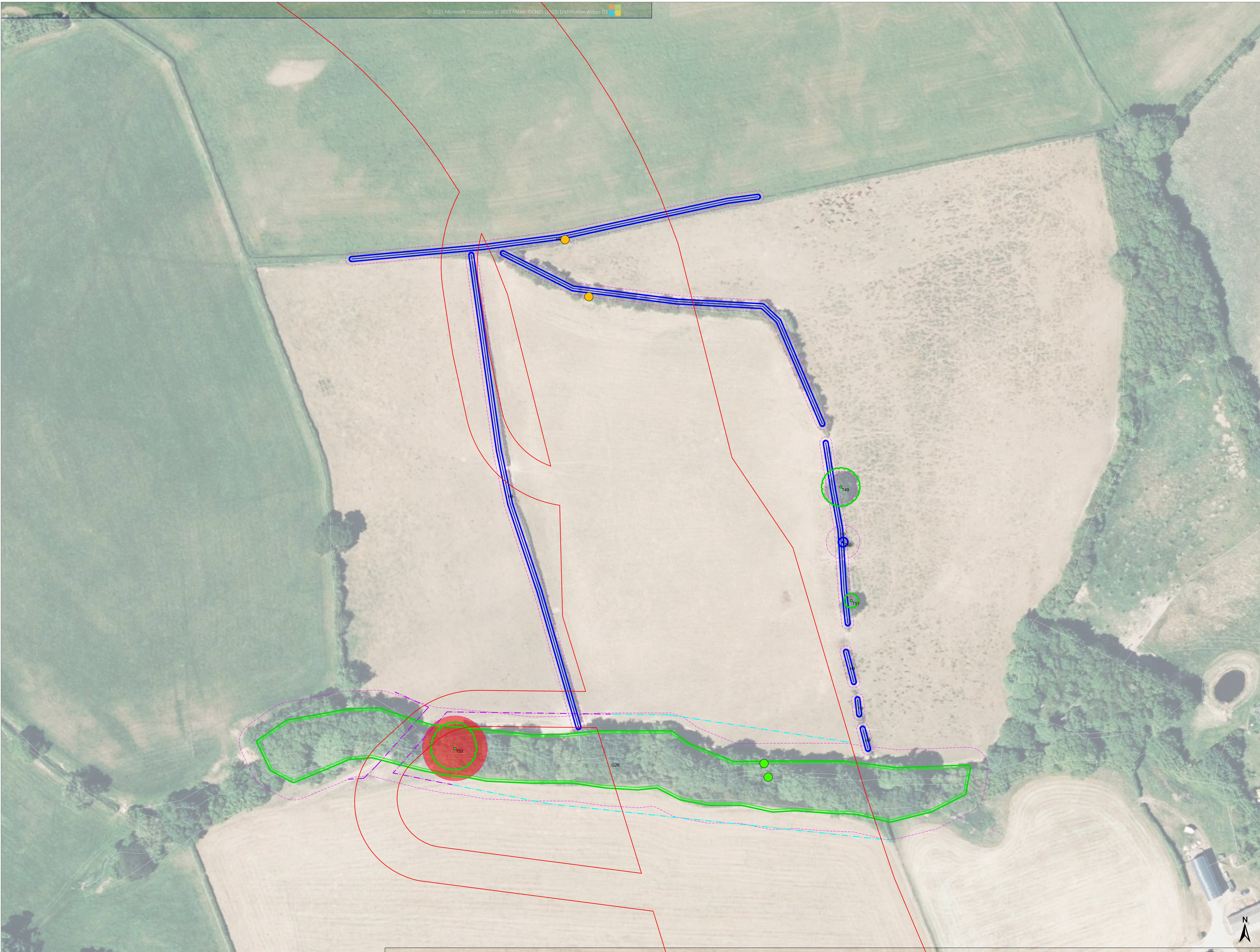
Drawing Title:
TREE AND HEDGEROW PROTECTION PLAN

Scale
Scale@A0: 1:500
0 50m

Geodetic Information:
Datum: ETRS 1989
Projection: British National Grid

Data Sources: Client

Service Layer Credits: Esri, HERE, Garmin, Intermap, increment P Corp., GEBCO, USGS, FAO, NPS, NRCAN, GeoBase, IGN, Kadaster NL, Ordnance Survey, Esri Japan, METI, Esri China (Hong Kong), (c) OpenStreetMap contributors, and the GIS User Community



LEGEND

Project boundary.

T1

Tree with numbered reference.
Canopy spread and coloured BS5837:2012 tree quality category as shown below.
= Tree details estimate (inaccessible tree)
• = Tree in off site location

G1

Vegetation group with numbered reference.
Canopy extents and coloured BS5837:2012 tree quality category as shown below.

H1

Hedge with numbered reference.
Canopy extents and coloured BS5837:2012 tree quality category as shown below.

W1

Woodland with numbered reference.
Canopy extents and coloured BS5837:2012 tree quality category as shown below.

BS 5837:2012 Tree Quality Categories - Table 1

●

Category A - High quality

●

Category B - Moderate quality

●

Category C - Low quality

●

Category U - Unsuitable for retention

T1

Tree or vegetation to be removed with
numbered reference. Canopy spread and
BS5837:2012 tree quality category.

Root protection area (RPA)
Calculated in accordance with Section
4.6 - BS5837:2012

Precautionary Root protection area (RPA)
Added to un-surveyed trees, preliminary
15mØ RPA added as preventative buffer

Tree protected by Conwy Council or
Denbighshire Tree Preservation Order
(TBC). Bracketed number reference relates
to the TPO Schedule.

Veteran tree buffer (15 x stem Ø)
(as per standing advice produced by
Natural Resource Wales)

Designated Ancient Woodland and buffer
(15m offset, as per Natural Resource Wales
woodland inventory, via open data
publication)

Arboricultural BRAG Assessment

Based on quantitative and professional assessment.
The ranking is defined as:

Black: Significant arboreal asset within development;

Red: High potential to constrain development;

Amber: Moderate potential to constrain development; and

Green: Low potential to constrain development

Construction Compound or Access Area

Arboricultural constraint based on providing a construction
exclusion zone (CEZ):

Black: At all times, compound should avoid
entering this area;

Red: In nearly all circumstances, compound
should avoid entering this area;

Amber: In most circumstances, compound
should avoid entering this area;

Green: Little or no arboricultural constraint
which would affect compound location.

Cable Crossing Technique

●

Trenchless

●

Trenching / Trenchless

●

Trenched

Temporary protective fencing in accordance
with Section 6.2 - BS5837:2012. See example,
also shown within supporting report.

Temporary visual warning barrier. See
example detail, also shown within supporting
report.

NOTES:

• Refer to RPS Tree Survey & Arboricultural Impact Assessment Report for
further details.

• Survey based on a visual inspection from the ground and is not intended
as a full arboricultural inspection.

• Plan produced in accordance with recommendations set out in BS
5837:2012 - 'Trees in Relation to design, demolition and construction'.

• Due to the level of protection afforded to breeding birds vegetation removal
should not take place during the bird nesting period, generally, although
not restricted to, March - August inclusive.

• Survey based upon aerial photography, therefore tree locations should be
deemed as approximate, and not digitally accurate.

• Pedestrian/ vehicular emergency access routes to be maintained at all
times.

• All protective fencing to be completed and approved by LPA / CA prior to
commencement of any site works.

• All works to conform with requirements of:
BS 5838:2010 - Tree Works
BS 5837:2012 - Trees in relation to design, demolition
and construction

Rev	Description	By	CB	Date

Drawing Number:				
7113				
VER	DATE	DETAILS	BY	CHECK
01	Jan/24	Comment	RC	DC
02	Feb/24	Information	RC	DC

Project Name:
MONA OFFSHORE WIND PROJECT

Drawing Title:
TREE AND HEDGEROW PROTECTION PLAN

Scale
Scale@A0: 1:500

050m

Geodetic Information:

Datum: ETRS 1989

Projection: British National Grid

Data Sources: Client

Service Layer Credits: Esri, HERE, Garmin, Intermap, increment P Corp., GEBCO,
USGS, FAO, NPS, NRCAN, GeoBase, IGN, Kadaster NL, Ordnance Survey, Esri Japan,
METI, Esri China (Hong Kong), (c) OpenStreetMap contributors, and the GIS User Community

P:\3990 Series\JSL3999 - Morgan and Mone O&F\Arboriculture\Tech\ACAD\Current\JSL3999_800C_TPP_Cable_Route.dwg
P:\3990 Series\JSL3999 - Morgan and Mone O&F\Arboriculture\Tech\ACAD\Current\JSL3999_800C_TPP Cable Route.dwg



LEGEND

- Project boundary.
- Tree with numbered reference.
Canopy spread and coloured BS5837:2012 tree quality category as shown below.
= Tree details estimate (inaccessible tree)
+ = Tree in off site location
- Vegetation group with numbered reference.
Canopy extents and coloured BS5837:2012 tree quality category as shown below.
- Hedge with numbered reference.
Canopy extents and coloured BS5837:2012 tree quality category as shown below.
- Woodland with numbered reference.
Canopy extents and coloured BS5837:2012 tree quality category as shown below.

- BS 5837:2012 Tree Quality Categories - Table 1
- Category A - High quality
- Category B - Moderate quality
- Category C - Low quality
- Category U - Unsuitable for retention
- Tree or vegetation to be removed with numbered reference. Canopy spread and BS5837:2012 tree quality category.
- Root protection area (RPA)
Calculated in accordance with Section 4.6 - BS5837:2012
- Precautionary Root protection area (RPA)
Added to un-surveyed trees, preliminary 15mØ RPA added as preventative buffer
- Tree protected by Conwy Council or Denbighshire Tree Preservation Order (TBC). Bracketted number reference relates to the TPO Schedule.
- Veteran tree buffer (15 x stem Ø)
(as per standing advice produced by Natural Resource Wales)
- Designated Ancient Woodland and buffer (15m offset, as per Natural Resource Wales woodland inventory, via open data publication)

Arboricultural BRAG Assessment
Based on quantitative and professional assessment.
The ranking is defined as:

- Black: Significant arboreal asset within development.
- Red: High potential to constrain development;
- Amber: Moderate potential to constrain development; and
- Green: Low potential to constrain development

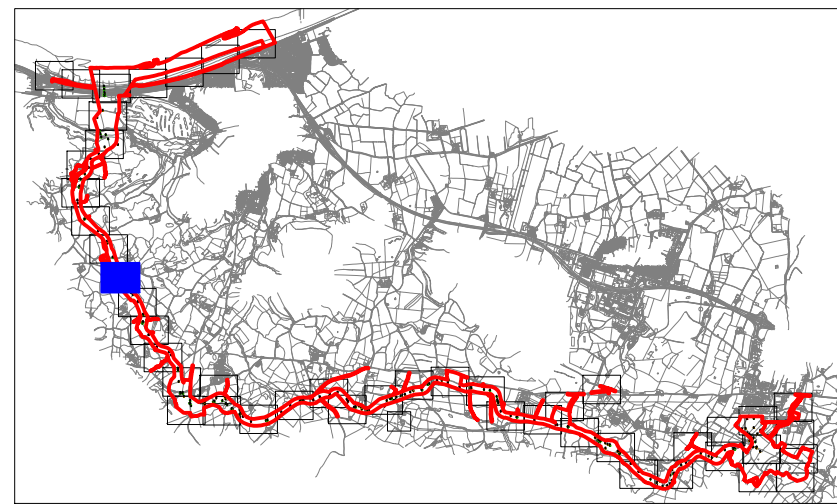
Construction Compound or Access Area
Arboricultural constraint based on providing a construction exclusion zone (CEZ).

Black: At all times, compound should avoid entering this area;
Red: In nearly all circumstances, compound should avoid entering this area;
Amber: In most circumstances, compound should avoid entering this area;
Green: Little or no arboricultural constraint which would affect compound location.

- Cable Crossing Technique
- Trenchless
- Trenching / Trenchless
- Trenched
- Temporary protective fencing in accordance with Section 6.2 - BS5837:2012. See example, also shown within supporting report.
- Temporary visual warning barrier. See example detail, also shown within supporting report.

NOTES:

- Refer to RPS Tree Survey & Arboricultural Impact Assessment Report for further details.
- Survey based on a visual inspection from the ground and is not intended as a full arboricultural inspection.
- Plan produced in accordance with recommendations set out in BS 5837:2012 - 'Trees in Relation to design, demolition and construction'.
- Due to the legal protection afforded to breeding birds vegetation removal should not take place during the bird nesting period, generally, although not restricted to, March - August inclusive.
- Survey based upon aerial photography, therefore tree locations should be deemed as approximate, and not digitally accurate.
- Pedestrian/ vehicular emergency access routes to be maintained at all times.
- All protective fencing to be completed and approved by LPA / CA prior to commencement of any site works.
- All works to conform with requirements of:
BS 5838:2010 - Tree Works
BS 5837:2012 - Trees in relation to design, demolition and construction



Rev	Description	By	CB	Date



Drawing Number:

7114

Project Name:
MONA OFFSHORE WIND PROJECT

Drawing Title:
TREE AND HEDGEROW PROTECTION PLAN

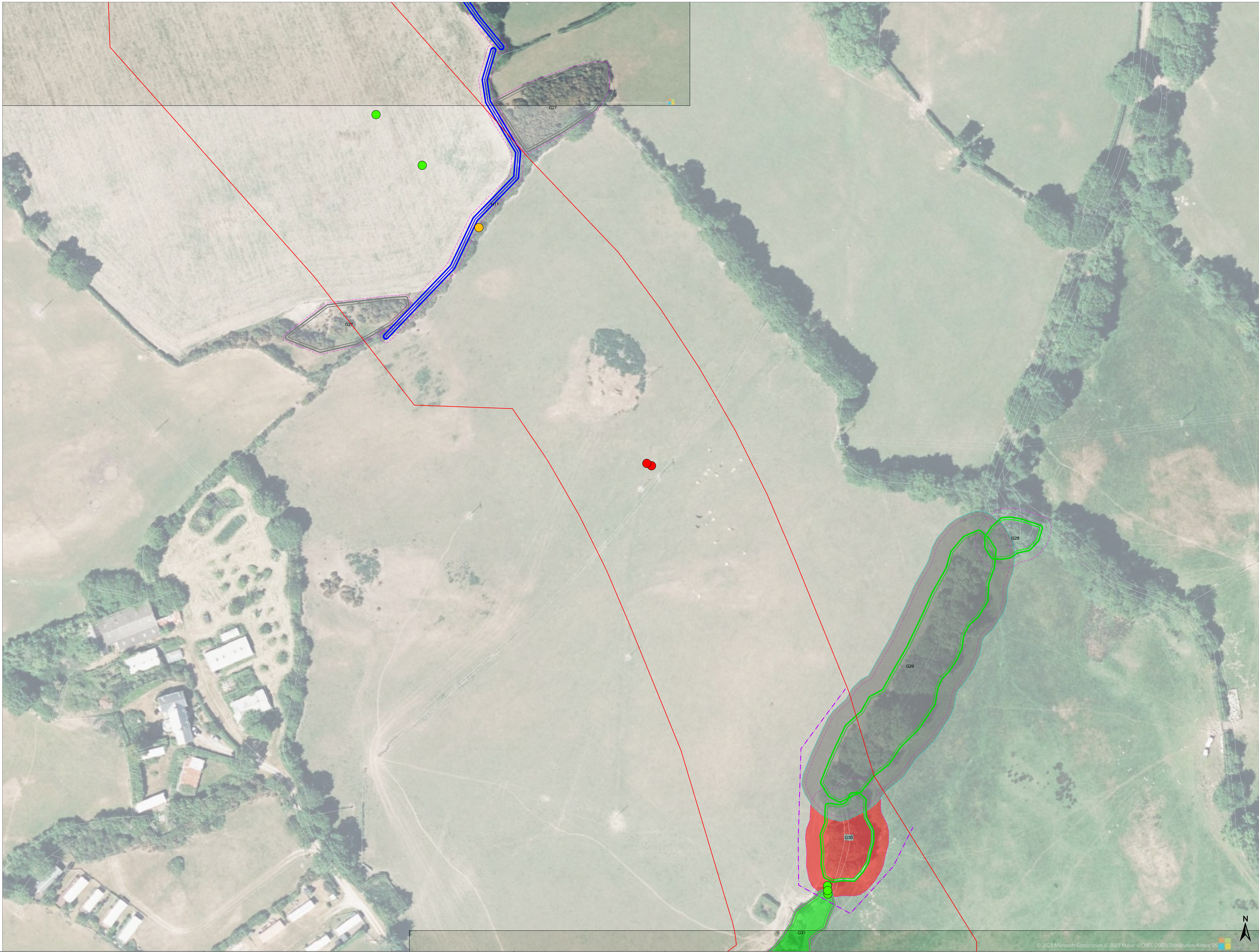
Scale
Scale@A0: 1:500
0 50m

Geodetic Information:
Datum: ETRS 1989
Projection: British National Grid

Data Sources: Client

Service Layer Credits: Esri, HERE, Garmin, Intermap, increment P Corp., GEBCO, USGS, FAO, NPS, NRCAN, GeoBase, IGN, Kadaster NL, Ordnance Survey, Esri Japan, METI, Esri China (Hong Kong), (c) OpenStreetMap contributors, and the GIS User Community

VER	DATE	DETAILS	BY	CHECK
01	Jan/24	Comment	RC	DC
02	Feb/24	Information	RC	DC



LEGEND

- Project boundary.
- Tree with numbered reference.
Canopy spread and coloured BS5837:2012 tree quality category as shown below.
= Tree details estimate (inaccessible tree)
+ = Tree in off site location
- Vegetation group with numbered reference.
Canopy extents and coloured BS5837:2012 tree quality category as shown below.
- Hedge with numbered reference.
Canopy extents and coloured BS5837:2012 tree quality category as shown below.
- Woodland with numbered reference.
Canopy extents and coloured BS5837:2012 tree quality category as shown below.

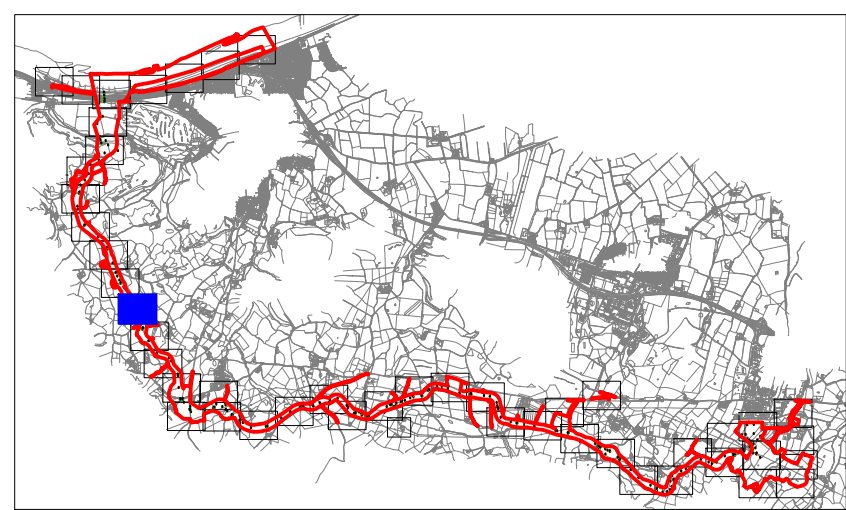
- BS 5837:2012 Tree Quality Categories - Table 1
- Category A - High quality
- Category B - Moderate quality
- Category C - Low quality
- Category U - Unsuitable for retention
- Tree or vegetation to be removed with numbered reference. Canopy spread and BS5837:2012 tree quality category.
- Root protection area (RPA)
Calculated in accordance with Section 4.6 - BS5837:2012
- Precautionary Root protection area (RPA)
Added to un-surveyed trees, preliminary 15mØ RPA added as preventative buffer
- Tree protected by Conwy Council or Denbighshire Tree Preservation Order (TBC). Bracketed number reference relates to the TPO Schedule.
- Veteran tree buffer (15 x stem Ø)
(as per standing advice produced by Natural Resource Wales)
- Designated Ancient Woodland and buffer (15m offset, as per Natural Resource Wales woodland inventory, via open data publication)

- Arboricultural BRAG Assessment
Based on quantitative and professional assessment.
The ranking is defined as:
- Black: Significant arboreal asset within development.
- Red: High potential to constrain development;
- Amber: Moderate potential to constrain development; and
- Green: Low potential to constrain development

- Construction Compound or Access Area
Arboricultural constraint based on providing a construction exclusion zone (CEZ).
- Black: At all times, compound should avoid entering this area;
- Red: In nearly all circumstances, compound should avoid entering this area;
- Amber: In most circumstances, compound should avoid entering this area;
- Green: Little or no arboricultural constraint which would affect compound location.

- Cable Crossing Technique
- Trenchless
- Trenching / Trenchless
- Trenched
- Temporary protective fencing in accordance with Section 6.2 - BS5837:2012. See example, also shown within supporting report.
- Temporary visual warning barrier. See example detail, also shown within supporting report.

- NOTES:
- Refer to RPS Tree Survey & Arboricultural Impact Assessment Report for further details.
 - Survey based on a visual inspection from the ground and is not intended as a full arboricultural inspection.
 - Plan produced in accordance with recommendations set out in BS 5837:2012 - 'Trees in Relation to design, demolition and construction'.
 - Due to the high protection afforded to breeding birds vegetation removal should not take place during the bird nesting period, generally, although not restricted to, March - August inclusive.
 - Survey based upon aerial photography, therefore tree locations should be deemed as approximate, and not digitally accurate.
 - Pedestrian/ vehicular emergency access routes to be maintained at all times.
 - All protective fencing to be completed and approved by LPA / CA prior to commencement of any site works.
 - All works to conform with requirements of:
BS 3698:2010 - Tree Works
BS 5837:2012 - Trees in relation to design, demolition and construction



Rev	Description	By	CB	Date



Drawing Number:

7115

Project Name:
MONA OFFSHORE WIND PROJECT

Drawing Title:
TREE AND HEDGEROW PROTECTION PLAN

Scale
Scale@A0: 1:500
0 50m

Geodetic Information:
Datum: ETRS 1989
Projection: British National Grid

Data Sources: Client

Service Layer Credits: Esri, HERE, Garmin, Intermap, increment P Corp., GEBCO, USGS, FAO, NPS, NRCAN, GeoBase, IGN, Kadaster NL, Ordnance Survey, Esri Japan, METI, Esri China (Hong Kong), (c) OpenStreetMap contributors, and the GIS User Community



LEGEND

Project boundary.

T1

Tree with numbered reference.
Canopy spread and coloured BS5837:2012 tree quality category as shown below.
= Tree details estimate (inaccessible tree)
• = Tree in off site location

G1

Vegetation group with numbered reference.
Canopy extents and coloured BS5837:2012 tree quality category as shown below.

H1

Hedge with numbered reference.
Canopy extents and coloured BS5837:2012 tree quality category as shown below.

W1

Woodland with numbered reference.
Canopy extents and coloured BS5837:2012 tree quality category as shown below.

BS 5837:2012 Tree Quality Categories - Table 1

Category A - High quality

Category B - Moderate quality

Category C - Low quality

Category U - Unsuitable for retention

T1

Tree or vegetation to be removed with numbered reference. Canopy spread and BS5837:2012 tree quality category.

Root protection area (RPA)
Calculated in accordance with Section 4.6 - BS5837:2012

Precautionary Root protection area (RPA)
Added to un-surveyed trees, preliminary 15mØ RPA added as preventative buffer

Tree protected by Conwy Council or Denbighshire Tree Preservation Order (TBC). Bracketed number reference relates to the TPO Schedule.

Veteran tree buffer (15 x stem Ø)
(as per standing advice produced by Natural Resource Wales)

Designated Ancient Woodland and buffer (15m offset, as per Natural Resource Wales woodland inventory, via open data publication)

Arboricultural BRAG Assessment

Based on quantitative and professional assessment. The ranking is defined as:

Black: Significant arboreal asset within development.

Red: High potential to constrain development.

Amber: Moderate potential to constrain development; and

Green: Low potential to constrain development

Construction Compound or Access Area

Arboricultural constraint based on providing a construction exclusion zone (CEZ).

Black: At all times, compound should avoid entering this area.

Red: In nearly all circumstances, compound should avoid entering this area.

Amber: In most circumstances, compound should avoid entering this area.

Green: Little or no arboricultural constraint which would affect compound location.

Cable Crossing Technique

Trenchless

Trenching / Trenchless

Trenched

Temporary protective fencing in accordance with Section 6.2 - BS5837:2012. See example, also shown within supporting report.

Temporary visual warning barrier. See example detail, also shown within supporting report.

NOTES:

Refer to RPS Tree Survey & Arboricultural Impact Assessment Report for further details.

Survey based on a visual inspection from the ground and is not intended as a full arboricultural inspection.

Plan produced in accordance with recommendations set out in BS 5837:2012 - 'Trees in Relation to design, demolition and construction'.

Due to the legal protection afforded to breeding birds vegetation removal should not take place during the bird nesting period, generally, although not restricted to, March - August inclusive.

Survey based upon aerial photography, therefore tree locations should be deemed as approximate, and not digitally accurate.

Pedestrian/vehicular emergency access routes to be maintained at all times.

All protective fencing to be completed and approved by LPA / CA prior to commencement of any site works.

All works to conform with requirements of:
BS 5837:2012 - Tree Works
BS 5837:2012 - Trees in relation to design, demolition and construction

Map of the project area showing the location of the project within the region.

Rev	Description	By	CB	Date

EnBW

Partners in UK offshore wind

bfc

rps

Drawing Number:

7116

VER	DATE	DETAILS	BY	CHECK
01	Jan/24	Comment	RC	DC
02	Feb/24	Information	RC	DC

Project Name:

MONA OFFSHORE WIND PROJECT

Drawing Title:

TREE AND HEDGEROW PROTECTION PLAN

Scale

Scale@A0: 1:500

Geodetic Information:

Datum: ETRS 1989
Projection: British National Grid

Data Sources:

Client

Service Layer Credits:

Esri, HERE, Garmin, Intermap, increment P Corp., GEBCO, USGS, FAO, NPS, NRCAN, GeoBase, IGN, Kadaster NL, Ordnance Survey, Esri Japan, METI, Esri China (Hong Kong), (c) OpenStreetMap contributors, and the GIS User Community



LEGEND

- Project boundary.
- Tree with numbered reference.
Canopy spread and coloured BS5837:2012 tree quality category as shown below.
= Tree details estimate (inaccessible tree)
• = Tree in off site location
- Vegetation group with numbered reference.
Canopy extents and coloured BS5837:2012 tree quality category as shown below.
- Hedge with numbered reference.
Canopy extents and coloured BS5837:2012 tree quality category as shown below.
- Woodland with numbered reference.
Canopy extents and coloured BS5837:2012 tree quality category as shown below.
- BS 5837:2012 Tree Quality Categories - Table 1
- Category A - High quality
- Category B - Moderate quality
- Category C - Low quality
- Category U - Unsuitable for retention
- Tree or vegetation to be removed with numbered reference. Canopy spread and BS5837:2012 tree quality category.
- Root protection area (RPA)
Calculated in accordance with Section 4.6 - BS5837:2012
- Precautionary Root protection area (RPA)
Added to un-surveyed trees, preliminary 15mØ RPA added as preventative buffer
- Tree protected by Conwy Council or Denbighshire Tree Preservation Order (TBC). Bracketed number reference relates to the TPO Schedule.
- Veteran tree buffer (15 x stem Ø)
(as per standing advice produced by Natural Resource Wales)
- Designated Ancient Woodland and buffer (15m offset, as per Natural Resource Wales woodland inventory, via open data publication)

Arboricultural BRAG Assessment
Based on quantitative and professional assessment.
The ranking is defined as:

- Black: Significant arboreal asset within development;
- Red: High potential to constrain development;
- Amber: Moderate potential to constrain development; and
- Green: Low potential to constrain development

Construction Compound or Access Area
Arboricultural constraint based on providing a construction exclusion zone (CEZ).

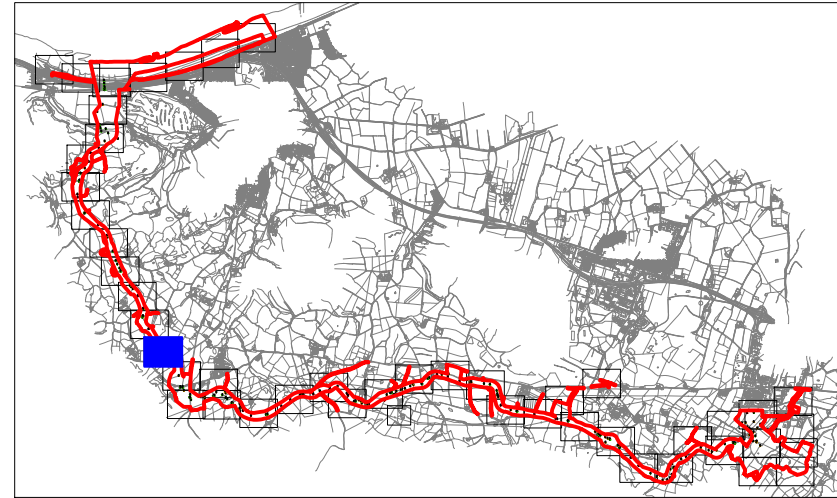
- Black: At all times, compound should avoid entering this area;
- Red: In nearly all circumstances, compound should avoid entering this area;
- Amber: In most circumstances, compound should avoid entering this area;
- Green: Little or no arboricultural constraint which would affect compound location.

Cable Crossing Technique

- Trenchless
- Trenching / Trenchless
- Trenched

- Temporary protective fencing in accordance with Section 6.2 - BS5837:2012. See example, also shown within supporting report.
- Temporary visual warning barrier. See example detail, also shown within supporting report.

- NOTES:
- Refer to RPS Tree Survey & Arboricultural Impact Assessment Report for further details.
 - Survey based on a visual inspection from the ground and is not intended as a full arboricultural inspection.
 - Plan produced in accordance with recommendations set out in BS 5837:2012 - 'Trees in Relation to design, demolition and construction'.
 - Due to the legal protection afforded to breeding birds vegetation removal should not take place during the bird nesting period, generally, although not restricted to, March - August inclusive.
 - Survey based upon aerial photography, therefore tree locations should be deemed as approximate, and not digitally accurate.
 - Pedestrian/vehicular emergency access routes to be maintained at all times.
 - All protective fencing to be completed and approved by LPA / CA prior to commencement of any site works.
 - All works to conform with requirements of:
BS 5837:2012 - Tree Works
BS 5837:2012 - Trees in relation to design, demolition and construction



Rev	Description	By	CB	Date



Drawing Number:

7117

Project Name:
MONA OFFSHORE WIND PROJECT

Drawing Title:
TREE AND HEDGEROW PROTECTION PLAN

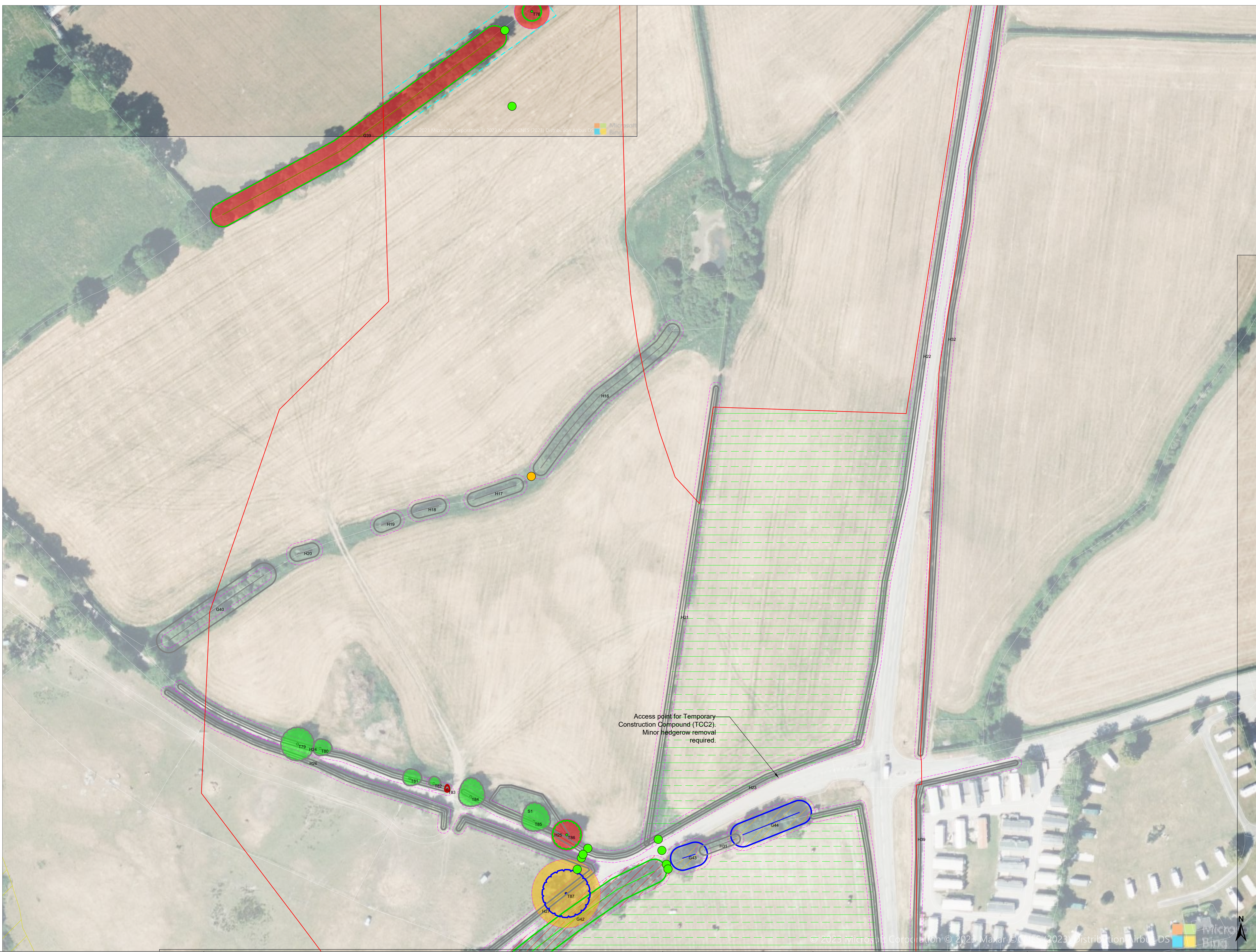
Scale
Scale@A0: 1:500
0 50m

Geodetic Information:
Datum: ETRS 1989
Projection: British National Grid

Data Sources: Client

Service Layer Credits: Esri, HERE, Garmin, Intermap, increment P Corp., GEBCO, USGS, FAO, NPS, NRCAN, GeoBase, IGN, Kadaster NL, Ordnance Survey, Esri Japan, METI, Esri China (Hong Kong), (c) OpenStreetMap contributors, and the GIS User Community

VER	DATE	DETAILS	BY	CHECK
01	Jan/24	Comment	RC	DC
02	Feb/24	Information	RC	DC



LEGEND

Project boundary.

Tree with numbered reference.
Canopy spread and coloured BS5837:2012 tree quality category as shown below.
= Tree details estimate (inaccessible tree)
• = Tree in off site location

Vegetation group with numbered reference.
Canopy extents and coloured BS5837:2012 tree quality category as shown below.

Hedge with numbered reference.
Canopy extents and coloured BS5837:2012 tree quality category as shown below.

Woodland with numbered reference.
Canopy extents and coloured BS5837:2012 tree quality category as shown below.

BS 5837:2012 Tree Quality Categories - Table 1
Category A - High quality

Category B - Moderate quality

Category C - Low quality

Category U - Unsuitable for retention

Tree or vegetation to be removed with numbered reference. Canopy spread and BS5837:2012 tree quality category.

Root protection area (RPA)
Calculated in accordance with Section 4.6 - BS5837:2012

Precautionary Root protection area (RPA)
Added to un-surveyed trees, preliminary 15mØ RPA added as preventative buffer

Tree protected by Conwy Council or Denbighshire Tree Preservation Order (TBC). Bracketed number reference relates to the TPO Schedule.

Veteran tree buffer (15 x stem Ø)
(as per standing advice produced by Natural Resource Wales)

Designated Ancient Woodland and buffer (15m offset, as per Natural Resource Wales woodland inventory, via open data publication)

Arboricultural BRAG Assessment
Based on quantitative and professional assessment.
The ranking is defined as:

Black: Significant arboreal asset within development;

Red: High potential to constrain development;

Amber: Moderate potential to constrain development; and

Green: Low potential to constrain development

Construction Compound or Access Area
Arboricultural constraint based on providing a construction exclusion zone (CEZ).

Black: At all times, compound should avoid entering this area;

Red: In nearly all circumstances, compound should avoid entering this area;

Amber: In most circumstances, compound should avoid entering this area;

Green: Little or no arboricultural constraint which would affect compound location.

Cable Crossing Technique
Trenchless

Trenching / Trenchless

Trenched

Temporary protective fencing in accordance with Section 6.2 - BS5837:2012. See example, also shown within supporting report.

Temporary visual warning barrier. See example detail, also shown within supporting report.

NOTES:

- Refer to RPS Tree Survey & Arboricultural Impact Assessment Report for further details
- Survey based on a visual inspection from the ground and is not intended as a full arboricultural inspection
- Plan produced in accordance with recommendations set out in BS 5837:2012 - 'Trees in Relation to design, demolition and construction'
- Due to the legal protection afforded to breeding birds vegetation removal should not take place during the bird nesting period, generally, although not restricted to, March - August inclusive.
- Survey based upon aerial photography, therefore tree locations should be deemed as approximate, and not digitally accurate
- Pedestrian/vehicular emergency access routes to be maintained at all times
- All protective fencing to be completed and approved by LPA / CA prior to commencement of any site works
- All works to conform with requirements of:
 - BS 5838:2010 - Tree Works
 - BS 5837:2012 - Trees in relation to design, demolition and construction

Rev	Description	By	CB	Date
-----	-------------	----	----	------

Partners in UK offshore wind

Drawing Number:
7118

VER	DATE	DETAILS	BY	CHECK
01	Jan/24	Comment	RC	DC
02	Feb/24	Information	RC	DC

